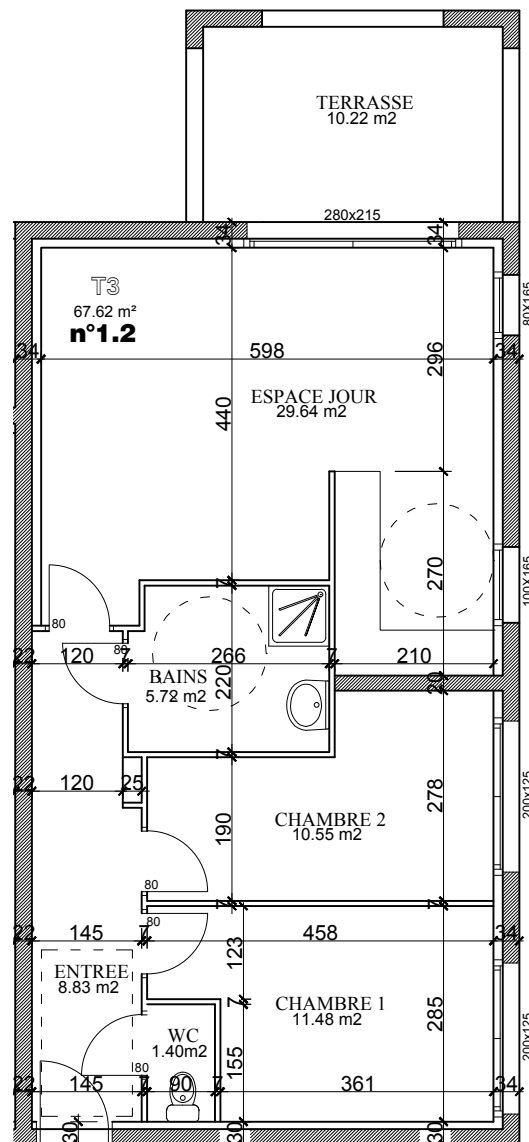


VILLE DE BOUSSE

Rue Marc CHAGALL



3P - n°1.2	
ENTREE	8.83 m ²
TOILETTES	5.72 m ²
ESPACE JOUR	29.64 m ²
WC	1.40 m ²
CHAMBRE 1	11.48 m ²
CHAMBRE 2	10.55 m ²
<hr/>	
Surface Habitable	67.62 m ²
TERRASSE	10.22 m ²

